

Description

The Sensus UniPro Software tool provides programming, data log downloading, and accuracy testing, reporting and error log capabilities when used with Sensus water metrology products. A UniPro communicator device is used with the Sensus electronic registers on the following products:

- iPERL
- Electronic Register
- ICE registers
- ICE-Opto registers
- OMNI R, T, C, F
- accuMAG

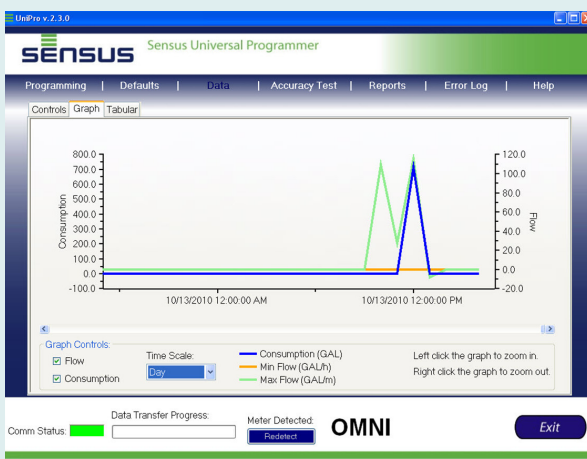
For PC use, the communicator is supplied with a USB cable end connector. For AR5500 handheld use, the communicator is supplied with an RS232 cable end connector.

The AutoGun is not applicable with the PC based solution.

Features

PROGRAMMING CAPABILITIES

Parameters	Definition	Meter/Register						
		ICE	ICE-Opto	Electronic Register	iPERL	OMNI R	OMNI T, C, F	accuMAG
Customer ID	Register ID sent for AMR/AMI	X	X	X	X	X	X	X
Programmable Text	Customer programmable information	X	X	X	X	X	X	X
AMR Digits	Digits sent for AMR/AMI	X	X	X	X	X	X	
Unit of Measure	Unit of Measure			X	X	X	X	
Rate of Flow Unit	Amount of water that flows over a given rate of time			X				
Alarm Save Duration (Days)	Number of days to save an alarm notification				X			
Leak Duration (Hours)	Number of consecutive hours flow must occur for a leak to be detected				X			
Datalog Interval	Time Interval for data log information				X			
History Masks	Used to determine what events should be logged				X			
Alarm Masks	Used to determine what alarms should be logged				X			
Pulse Output	Used to select the wheel to trigger the pulse output signal						X	
Display Mode	Upon initial lid opening to view AMR digits or totalizer (all 8 digits)					X	X	



DATA LOG CAPABILITIES

The iPERL and OMNI meters capture interval data. The data is downloaded via the UniPro software tool. The data can be viewed in a graphic or tabular layout.

Interval Data Collected	Definition	Meter/Register	
		iPERL	OMNI T, C, F
Consumption	Volume of water passed through the meter during the measuring interval	X	X
Maximum Flow	Peak flow of water passed through the meter during the measuring interval	X	X
Minimum Flow	Lowest flow of water passed through the meter during the measuring interval		X

REPORTING CAPABILITIES

Parameters	Definition	ICE	ICE-Opto	Electronic Register	iPERL	OMNI R	OMNI T, C, F	accuMAG
Meter Programming	Date, time and specific meter information for programming parameters	X	X	X	X	X	X	X
Data logging	Tabular view of the data log				X		X	
Accuracy Testing	Accuracy performance report						X	
Alarms	List of the alarms that are reported, active and saved				X			
History	Date, time, event history and alarms				X			
Lifetime	Meter age, lifetime used, date of manufacture, projected end of life				X			

ACCURACY TESTING CAPABILITIES

The Accuracy Testing feature in UniPro provides utilities a step by step procedure to collect information during an OMNI meter accuracy test. At the conclusion of the accuracy test, a performance report is provided.

Company Name: Sensus		Date: 10/19/2010						
Customer ID: ABC Store		Factory ID: 69851188						
Current AMR: 00001741 Gallons								
Sensus								
SINGLE REGISTER METER PERFORMANCE REPORT								
SERIAL#: 69851188		SIZE: 1.5" - 3"		CUSTOMER: ABC Store				
DATE: 10/19/2010		TYPE: TBZE		METER LOCATION: 1 A1A, Miami, FL				
READING (BEFORE): 1693		READING (BACK IN SERV): 1741						
METER REGISTRATION: Gallons		TESTER RATE UNITS: GPM		TESTER REGISTRATION: Gallons				
METER UNDER TEST								
METER	FLOW RATE (GPM)	Stop Reading	Start Reading	Meter Volume (Gallons)	CONVERTED Volume to (Gallons)	TESTER VOLUME (Gallons)	TESTER % from TAG	METER ACCURACY
TOTAL	160	30.88	0	30.88		30.88	99.5	99.5%
METER UNDER TEST								
METER	FLOW RATE (GPM)	Stop Reading	Start Reading	Meter Volume (Gallons)	CONVERTED Volume to (Gallons)	TESTER VOLUME (Gallons)	TESTER % from TAG	METER ACCURACY
TOTAL	1	10.77	0	10.77		10.77	100.6	100.6%
METER UNDER TEST								
METER	FLOW RATE (GPM)	Stop Reading	Start Reading	Meter Volume (Gallons)	CONVERTED Volume to (Gallons)	TESTER VOLUME (Gallons)	TESTER % from TAG	METER ACCURACY
TOTAL	0.25	6.55	0	6.55		6.55	98.5	98.5%
TESTING PERFORMED BY: Jack						DATE: 10/19/2010		

© All products purchased and services performed are subject to Sensus' terms of sale, available at either; <http://na.sensus.com/TC/TermsConditions.pdf> or 1-800-METER-IT. Sensus reserves the right to modify these terms and conditions in its own discretion without notice to the customer.

This document is for informational purposes only, and SENSUS MAKES NO EXPRESS WARRANTIES IN THIS DOCUMENT. FURTHERMORE, THERE ARE NO IMPLIED WARRANTIES, INCLUDING WITHOUT LIMITATION, WARRANTIES AS TO FITNESS FOR A PARTICULAR PURPOSE AND MERCHANTABILITY. ANY USE OF THE PRODUCTS THAT IS NOT SPECIFICALLY PERMITTED HEREIN IS PROHIBITED.